

## Monthly Weather Summary in Thailand July 2016

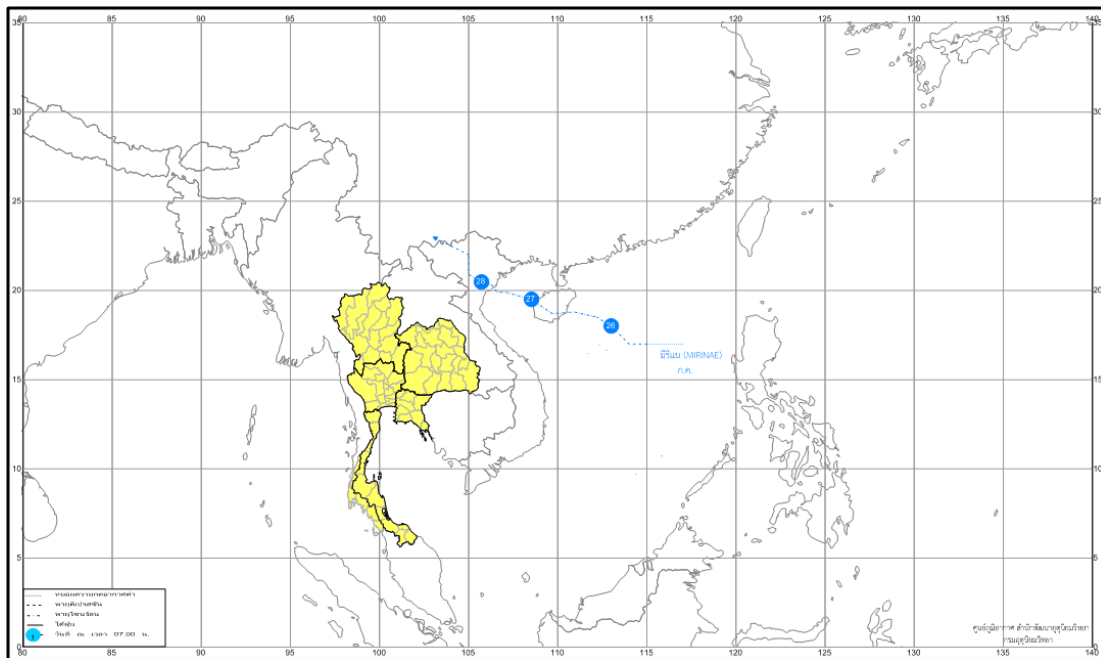
The periodically active southwest monsoon prevailing over the Andaman Sea, Thailand and the Gulf of Thailand throughout the month accompanied with the low pressure cell covered the upper Vietnam during early month and the prevailing of the southeasterly wind over the northeastern, central and eastern parts during mid-month. Besides, the remnant of tropical storm “MIRENAE (1603)” over the northern Vietnam and southern China during the last week of July coupled with the covering of the low pressure cell over Myanmar and western of northern Thailand on July 30 and 31. These conditions brought abundant rainfall in Thailand almost the whole month. Monthly rainfall was above normal in every parts i.e. northern part 37.7 mm (21%), northeastern part 25.7 mm (12%), central part 23.2 mm (15%), eastern part 65.4 mm (24%), southern part (east coast) 20.6 mm (17%) and southern part (west coast) 76.1 mm (23%). Overall, the monthly total rainfall was 19 % above the normal and the accumulated rainfall since 1 January was about 1% above the normal.

**1 – 10 July:** The southwest monsoon prevailing over the Andaman Sea, Thailand and the Gulf of Thailand was active during the second half of the period. In addition, the low pressure cell covered upper Vietnam, the northern and northeastern parts of Thailand during mid-period. These caused abundant rainfall throughout the period especially fairly widespread to widespread rain with heavy to very heavy rainfall in some areas during mid-period. The maximum daily rainfall of 265.0 mm was measured at Kao Wong in Kalasin province on July 5 with the river overflows its bank occurred at Phitsanulok province on July 4. In southern Thailand, isolated rain with heavy rainfall occurred during early period after that fairly widespread to widespread rain with heavy to very heavy rainfall in some areas. The highest rainfall amount was 130.0 mm at Ban Na San in Surat Thani province on July 9. Landslides were reported in Ranong and Surat Thani provinces on July 6 and 7 respectively. Gusty wind occurred at Phang-nga province on July 7 and the river overflowed its bank occurred at Surat Thani province on July 9.

**11 – 20 July:** The moderate southwest monsoon prevailed over the Andaman Sea, Thailand and the Gulf of Thailand in the first half of the period after that it weakened. In addition, the southeasterly wind prevailed over the northeastern and eastern parts during late period. These caused scattered to fairly widespread rain with heavy to very heavy rainfall in some areas except for widespread rain with heavy rainfall in several areas and very heavy rainfall in some areas during late period. . The maximum daily rainfall of 303.0 mm was measured at Lan Krabue in Kamphaeng Phet province on July 19. The river overflows its bank and land slide occurred at Nan province on July 14. Gusty wind occurred at Uttaradit, Maha Sarakham, Roi Et and Ratchaburi provinces on July 18, at Phrae and Khon Kean provinces on July 19. Southern Thailand obtained fairly widespread rain almost the whole period with heavy to very heavy rainfall in some areas. The heaviest daily rainfall was 209.9 mm at Takua Pa in Phang-nga province on July 17. Gusty wind occurred at Ranong, Surat Thani and Trang provinces on July 18.

**21 – 31 July:** The southwest monsoon which prevailing over the Andaman Sea, southern part and the Gulf of Thailand was strengthened during late period accompanied with the prevailing of the southeasterly wind over the northeastern, central and eastern during early period as well as the low pressure cell covering Myanmar and western side of the northern Thailand on July 30 and July 31. Besides, the tropical depression in the middle of South China Sea intensified into the tropical storm

“MIRENAE (1603)” in the afternoon of July 26 after that it moved pass Hainan Island to the Gulf of Tonkin before making landfall over northern Vietnam in the morning of July 28. It moved further inland and weakening to a tropical depression in the evening and later dissipated in the southern China on the following day. Under these influence, upper Thailand received scattered to fairly widespread rain almost the whole period with heavy to very heavy rainfall in some areas especially in the northeastern part and lower coastal areas of the eastern part during late period. The maximum daily rainfall in upper Thailand was 268.9 mm at King Amphoe Ko Kut in Trat province on July 28. Gusty wind occurred in Phayao and Ang Thong provinces on July 22, Maha Sarakham province on July 23 and Loei province on Jul 24, Amnat Charon, Mukdahan and Chachoengsao provinces on July 26, Mae Hong Son and Chiang Rai provinces on July 27. Flash floods occurred in Tak province on July 27, Chiang Rai, Udon Thani and Chanthaburi provinces on July 29 and Chiang Mai province on July 31. Southern Thailand obtained scattered to fairly widespread rain with heavy to very heavy rainfall in some areas along the east coast with the occurrence of the gusty wind in Songkhla province on July 26. Isolated to scattered rain with heavy rainfall in some areas was found along the west coast except for widespread rain with heavy to very heavy rainfall in some areas during mid-period. The highest daily rainfall amount was 120.0 mm at Ban Na San in Surat Thani province on July 22.



Tropical storm “MIRENAE” tracks in July 2016

**Note :** Rainfall, temperatures and natural disasters in this report were updated up to August 2, 2016

Monthly Current Report  
Rainfall and Accumulative Rainfall  
July 2016

Northern Thailand

Station	Temperature ( °c)		Rainfall (mm)		Accumulative rainfall (mm) Since 1 January	
	Mean	Above or below normal	Actual	Above or below normal	Actual	Above or below normal
Chiang Rai	26.8	0.1	332.9	22.0	980.7	130.6
Mae Hong Son	27.3	0.3	232.9	6.0	587.7	-96.6
Phayao	27.2	0.2	81.4	-60.4	394.9	-163.7
Chiang Mai	27.6	0.4	162.1	21.9	581.1	66.2
Tha Wang Pha	27.9	0.7	304.5	36.1	947.6	170.8
Nan	27.9	0.2	269.5	68.8	850.0	189.6
Lamphun	27.8	0.0	222.8	105.8	713.0	251.7
Lampang	27.9	0.1	119.4	-15.2	530.8	18.0
Mae Sariang	27.0	0.8	156.6	-24.6	468.0	-125.4
Phrae	27.7	0.0	305.8	151.6	660.5	65.1
Uttaradit	28.3	-0.1	291.4	125.0	615.8	-101.4
Bhumibol Dam	28.4	0.2	180.1	113.4	448.3	-19.2
Tak	28.4	0.3	171.8	84.1	446.1	-24.8
Mae Sot	26.6	0.8	211.6	-117.4	567.2	-261.6
Umphang	25.3	0.8	187.8	-43.8	640.6	-138.6
Phitsanulok	28.3	-0.2	223.8	44.4	740.7	124.9
Lom Sak	27.6	0.0	186.8	58.2	684.1	139.6
Phetchabun	28.1	0.4	191.9	43.1	541.2	-77.7
Wichian Buri	28.5	-0.1	179.8	33.9	472.4	-136.7
Kamphaeng Phet	28.2	0.1	260.2	100.8	530.5	-94.4
Over the area	27.6	0.2	213.7	37.7 21%	620.1	-4.3 -1%

Northeastern Thailand

Station	Temperature ( °c)		Rainfall (mm)		Accumulative rainfall (mm) Since 1 January	
	Mean	Above or below normal	Actual	Above or below normal	Actual	Above or below normal
Nong Khai	28.5	0.7	220.0	-61.4	1045.0	127.6
Loei	27.6	0.2	155.6	9.8	703.0	34.0
Udon Thani	28.4	0.2	130.6	-80.3	816.7	26.2
Nakhon Phanom	28.0	0.7	505.3	2.3	1261.4	-103.4
Sakon Nakhon	28.0	0.3	207.0	-81.7	731.7	-236.2
Mukdahan	28.5	0.7	217.7	-14.2	645.0	-156.1
Khon Kaen	28.0	-0.1	188.6	15.3	578.7	-82.0
Kosum Phisai	28.7	0.1	258.0	98.0	844.7	186.1
Roi Et	28.5	0.2	230.3	34.4	661.2	-84.2
Chaiyaphum	28.1	0.1	143.5	33.1	626.1	75.2
Ubon Ratchathani	28.6	0.6	265.2	10.8	1099.4	261.5
Tha Tum	28.1	-0.5	265.4	47.2	813.2	64.5
Surin	28.0	0.1	261.2	39.9	644.2	-117.6
Nakhon Ratchasima	28.3	-0.3	258.0	137.1	582.4	69.3
Chok Chai	28.4	0.1	175.3	56.4	564.1	51.3
Nang Rong	28.0	-0.1	311.1	163.1	743.4	145.3
Over the area	28.2	0.2	237.1	25.7 12%	772.5	16.3 2%

- NOTES :
- 1) Mean temperature is the average of daily dry-bulb temperature
  - 2) "T" is trace, rainfall amount less than 0.1 mm.
  - 3) "blank" is incomplete data.
  - 4) Temperature and rainfall are preliminary data.

Monthly Current Report  
Rainfall and Accumulative Rainfall  
July 2016

Central Thailand

Station	Temperature ( °c)		Rainfall (mm)		Accumulative rainfall (mm) Since 1 January	
	Mean	Above or below normal	Actual	Above or below normal	Actual	Above or below normal
Nakhon Sawan	28.6	-0.2	138.2	-9.8	402.0	-147.0
Bua Chum	28.4	-0.1	169.9	52.9	497.9	-14.6
Lop Buri	28.8	0.2	309.0	188.9	561.1	43.7
Suphan Buri	29.2	0.5	157.0	58.2	546.0	159.9
Thong Pha Phum	27.4	0.9	249.5	-73.7	711.6	-287.4
Kanchanaburi	29.2	0.6	130.5	27.6	450.5	-13.1
Bangkok Airport	29.1	0.1	113.0	-46.1	615.2	-68.9
Bangkok Metropolis	29.6	0.6	162.7	-12.4	878.2	131.5
Over the area	28.8	0.3	178.7	23.2 15%	582.8	-24.5 -4%

Eastern Thailand

Station	Temperature ( °c)		Rainfall (mm)		Accumulative rainfall (mm) Since 1 January	
	Mean	Above or below normal	Actual	Above or below normal	Actual	Above or below normal
Prachin Buri	28.8	0.3	477.0	205.1	925.7	7.9
Kabin Buri	27.8	-0.1	314.8	73.6	647.9	-167.7
Aranyaprathet	28.2	0.1	204.1	37.7	608.3	-61.1
Chon Buri	29.7	0.5	191.7	51.1	541.2	-68.2
Ko Sichang	29.2	0.3	166.4	43.0	451.6	-85.1
Pattaya	28.7	0.2	198.0	100.6	606.9	95.0
Sattahip	28.6	-0.3	193.6	86.1	765.4	173.2
Rayong	28.7	-0.3	248.5	76.7	659.7	-84.9
Chanthaburi	27.8	0.2	596.6	113.4	1693.3	52.8
Khlong Yai	27.2	0.2	838.1	-133.5	2795.8	143.7
Over the area	28.5	0.1	342.9	65.4 24%	969.6	0.5 0%

- NOTES :
- 1) Mean temperature is the average of daily dry-bulb temperature
  - 2) "T" is trace, rainfall amount less than 0.1 mm.
  - 3) "blank" is incomplete data.
  - 4) Temperature and rainfall are preliminary data.

Monthly Current Report  
Rainfall and Accumulative Rainfall  
July 2016

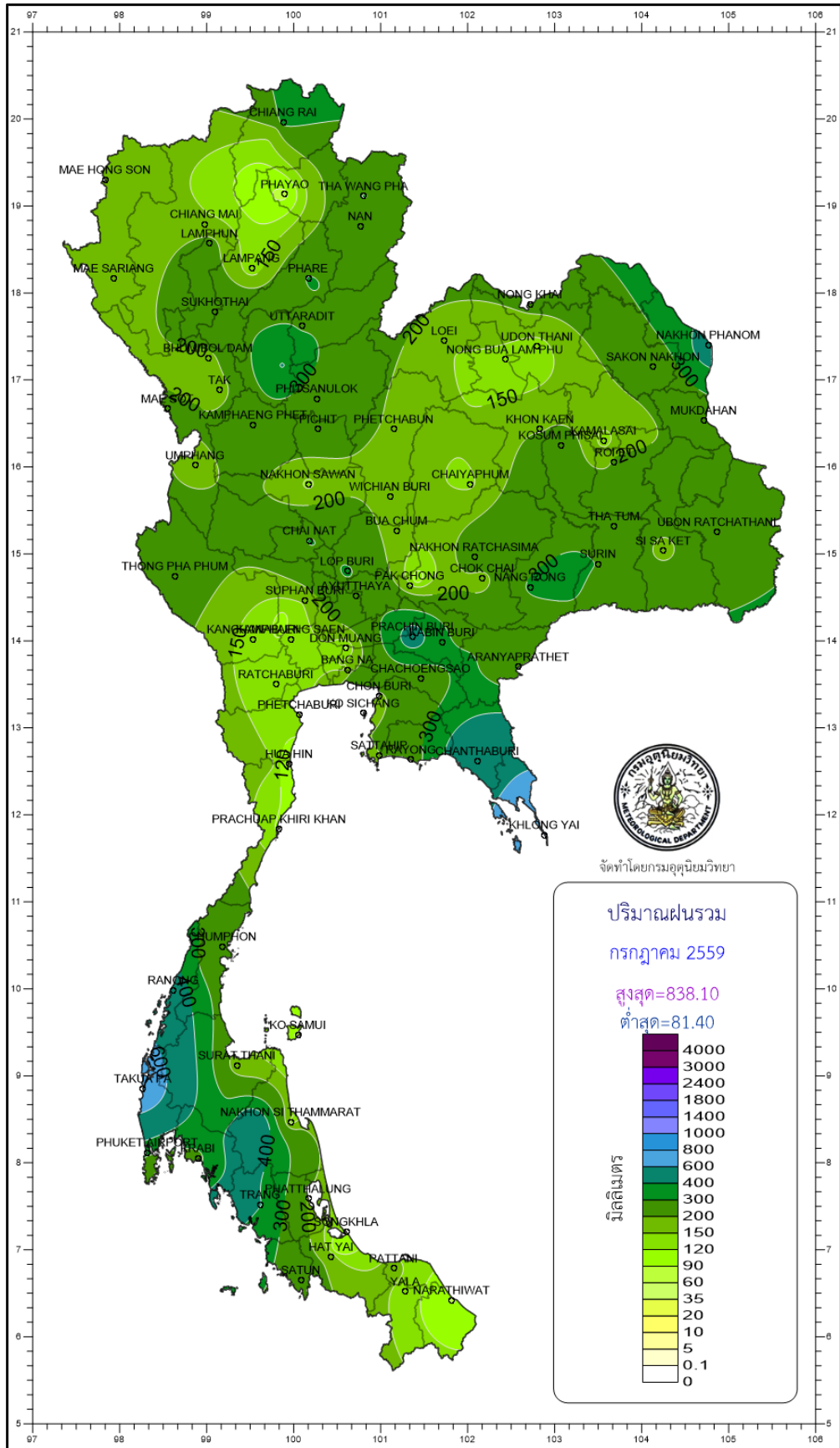
Southern Thailand, east coast

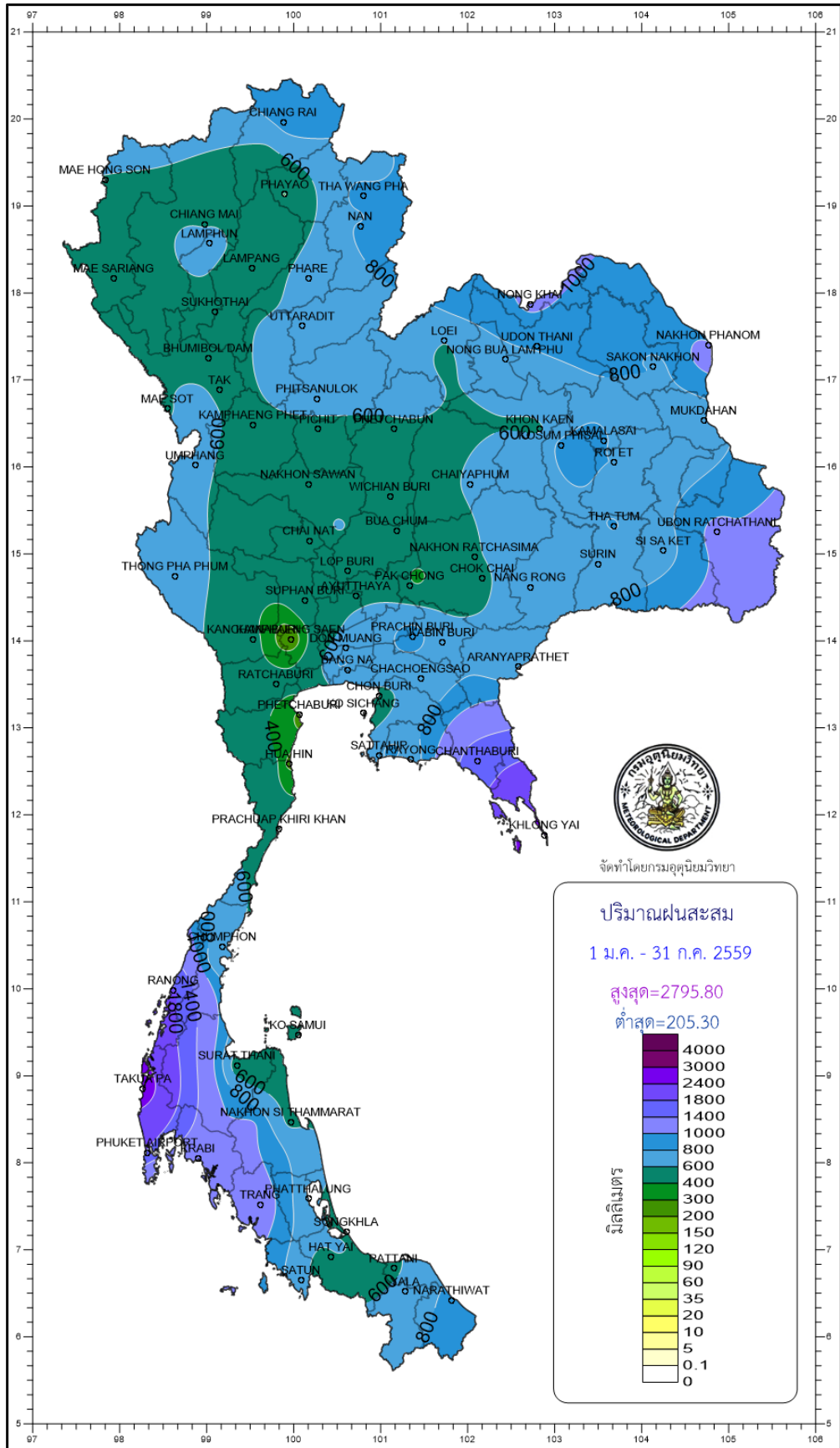
Station	Temperature ( °c)		Rainfall (mm)		Accumulative rainfall (mm) Since 1 January	
	Mean	Above or below normal	Actual	Above or below normal	Actual	Above or below normal
Phetchaburi	29.2	0.5	134.8	54.0	284.0	-73.6
Hua Hin	29.0	0.4	82.0	-11.0	260.8	-147.4
Prachuap Khiri Khan	28.5	0.5	115.2	5.9	444.6	-51.3
Chumphon	27.8	0.6	272.4	93.4	664.4	-159.7
Surat Thani	27.6	0.5	158.8	10.0	465.8	-132.5
Ko Samui	28.8	0.5	85.8	-30.5	524.4	-176.4
Nakhon Si Thammarat	27.7	-0.2	140.4	22.6	532.5	-286.7
Songkhla	28.7	0.4	115.5	20.5	518.0	-54.7
Hat Yai Airport	27.6	0.2	179.2	74.7	497.8	-145.6
Pattani Airport	28.1	0.5	162.4	33.3	567.2	-15.7
Narathiwat	28.1	0.6	87.8	-46.2	860.3	115.5
Over the area	28.3	0.4	139.5	20.6 17%	510.9	-102.7 -17%

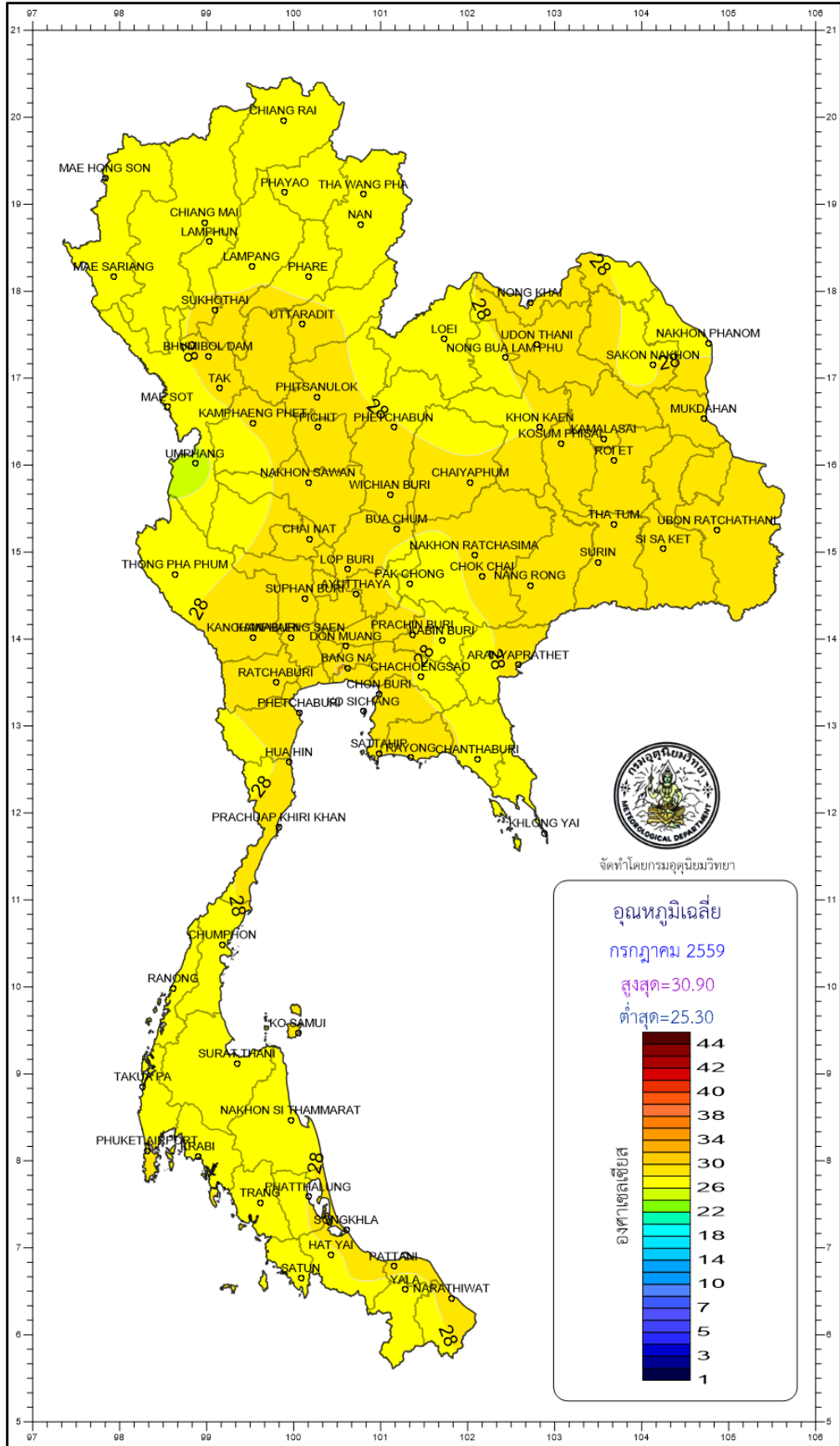
Southern Thailand, west coast

Station	Temperature ( °c)		Rainfall (mm)		Accumulative rainfall (mm) Since 1 January	
	Mean	Above or below normal	Actual	Above or below normal	Actual	Above or below normal
Ranong	27.3	0.4	485.0	-135.7	1877.5	-133.0
Takua Pa	27.3	-0.1	779.3	349.4	2702.6	1005.9
Phuket	28.4	0.2	198.4	-59.8	985.7	-15.9
Phuket Airport	28.3	0.4	319.3	57.8	1765.8	648.3
Ko Lanta	28.3	0.1	451.6	155.3	1320.5	306.5
Trang Airport	27.4	0.4	403.1	144.6	1186.2	232.7
Satun	27.9	0.5	251.5	20.9	691.3	-351.1
Over the area	27.8	0.2	412.6	76.1 23%	1504.2	241.9 19%

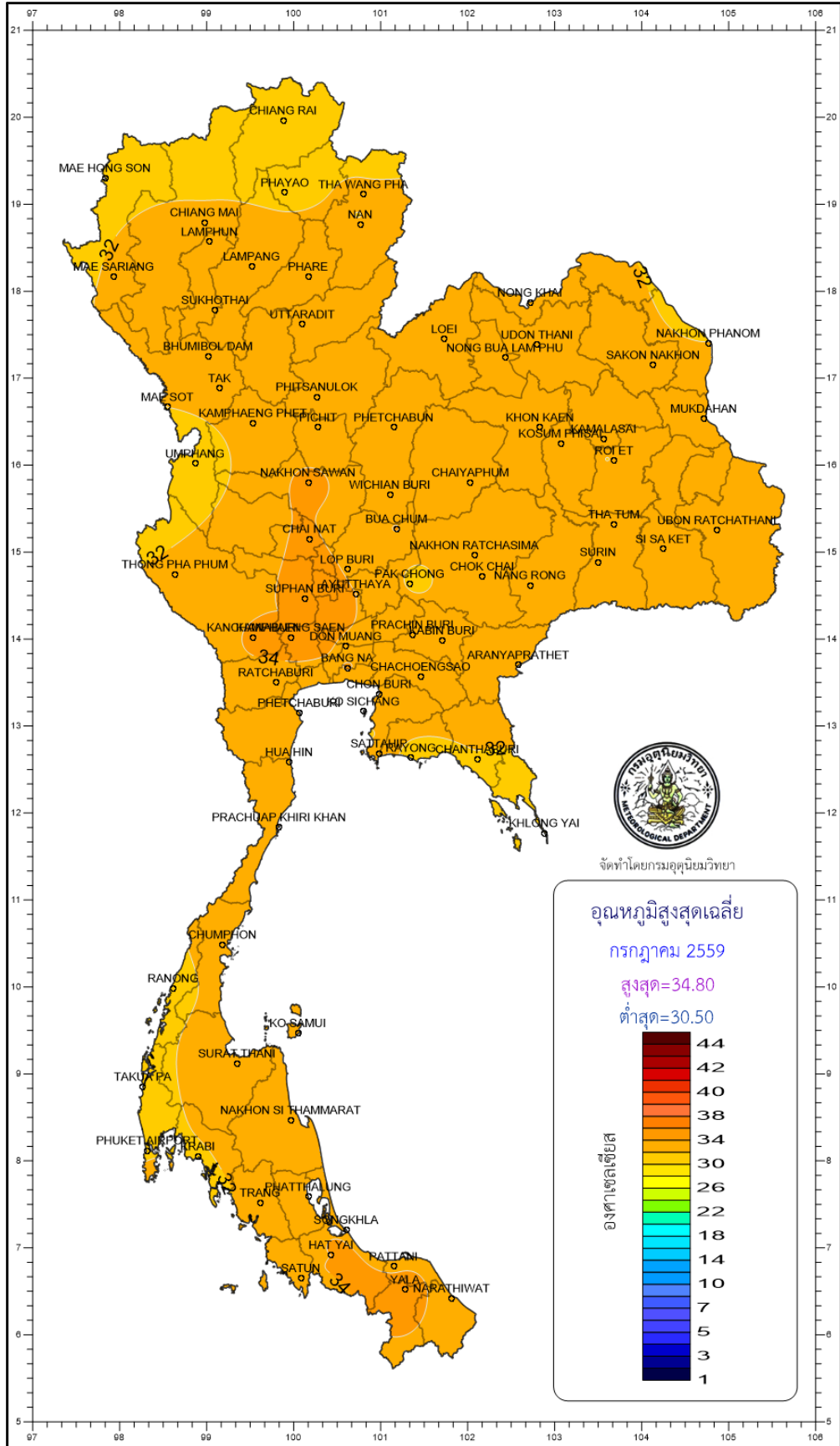
- NOTES :
- 1) Mean temperature is the average of daily dry-bulb temperature
  - 2) "T" is trace, rainfall amount less than 0.1 mm.
  - 3) "blank" is incomplete data.
  - 4) Temperature and rainfall are preliminary data.

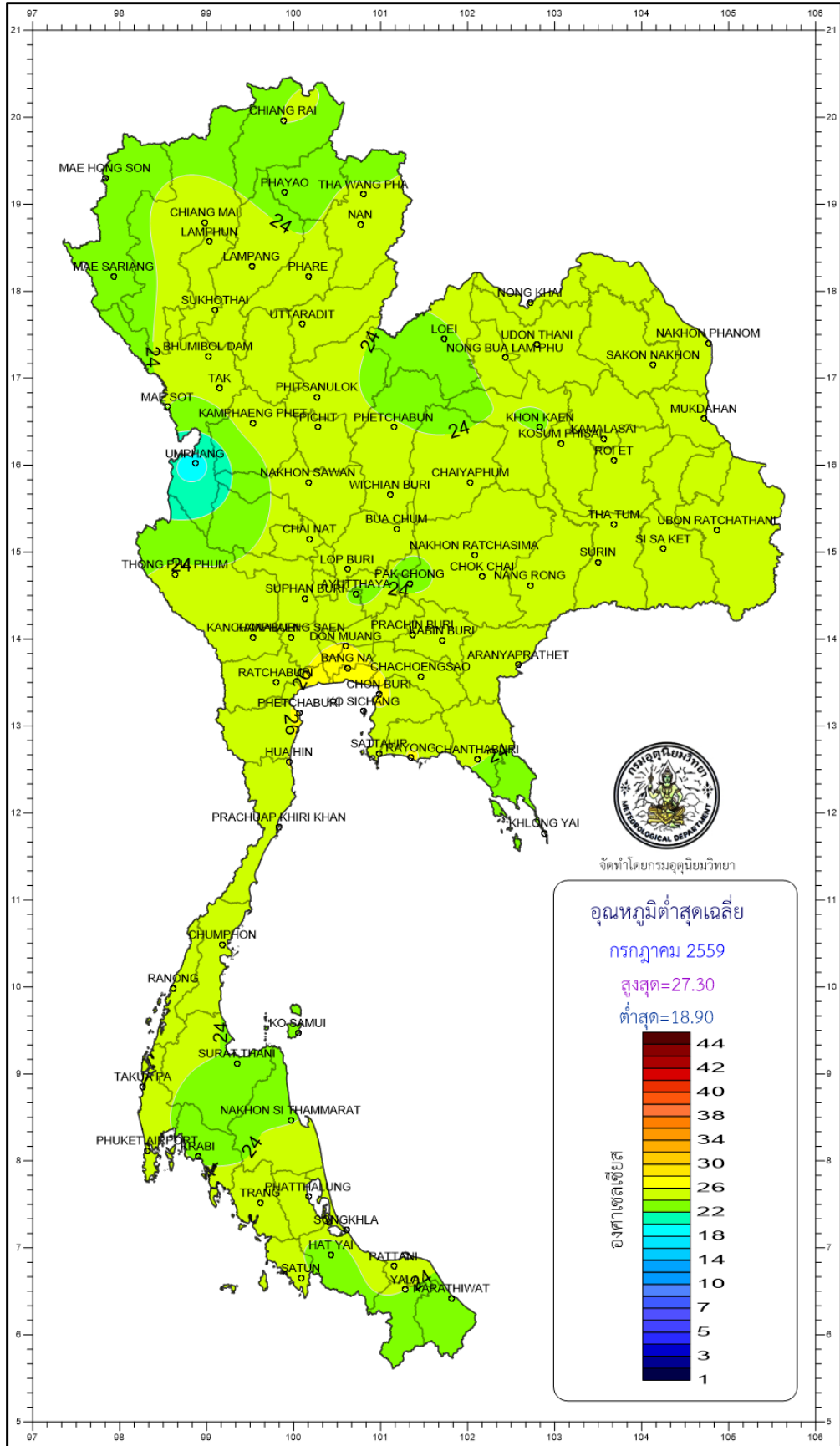












จัดทำโดยกรมอุตุนิยมวิทยา